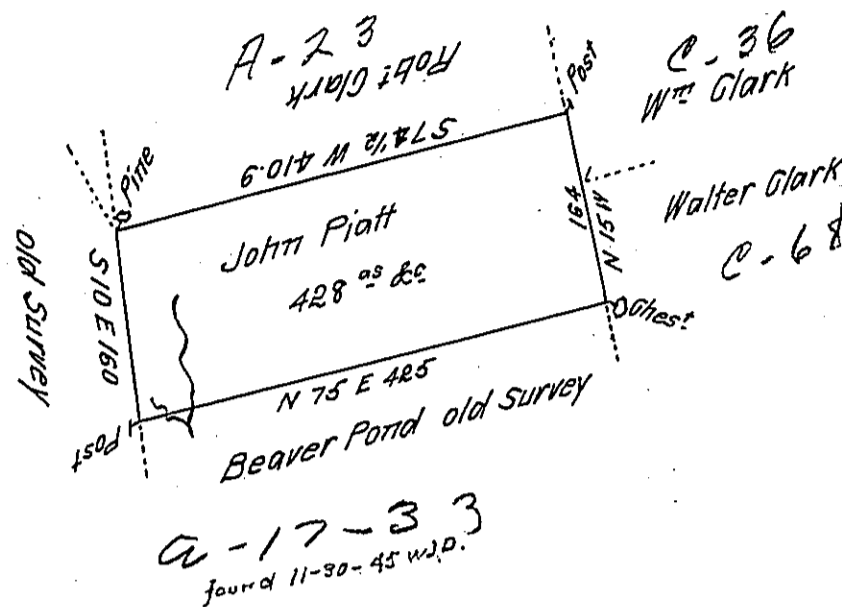


Hazle-
Luzerne.



A Draft of a tract of land Called — Situate on the waters of
Beaver Pond Creek in the County of Northum^{er} containing four Hundred
& twenty Eight acres & allow^d Surv^r for John Piatt the 12th Day of Sep^r
1793. by warrant dated the 13th day of June 1793.

To Daniel Brodhead Esq^r.
Surv^r Gen^l.

by W^m Gray II. S.

IN TESTIMONY that the above is a copy of the original remaining on file in
the Department of Internal Affairs of Pennsylvania, made
conformably to an Act of Assembly approved the 16th day of
February, 1833, I have hereunto set my Hand and caused
the Seal of said Department to be affixed at Harrisburg,
this twelfth day of September 1911

Henry Bouck
Secretary of Internal Affairs.